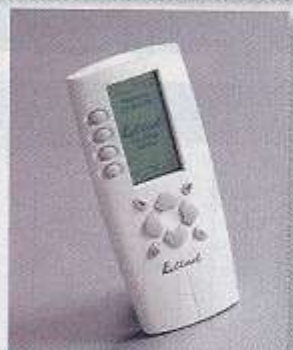


NICEIC celebrates 15,000



Independence day

Thermo-dynamic, fluid filled electric radiators are the brainchild of French manufacturer, Kalirel, which has a heritage in the manufacture of wet heating systems. The independent-working radiators, which can be centrally controlled, provide comfortable heat that does not dry the air. They are said to be more energy efficient and cost effective to run than storage or conventional panel heaters, and a better choice where electric heating is the preferred or only option. An established brand in

A heating system that offers remote, wireless radiator control could add a new dimension to your business. PHPI reports.

Europe, Kalirel electric heating without pipes, wires or the need of a boiler, is proving popular with homeowners and commercial premises where there are no gas or oil supplies, or where an existing boiler cannot support further radiators. For the environmentally aware, it is also an alternative. If wet systems can't be installed or are difficult/expensive to put in, the system could make the difference between winning and losing business and is something to consider when customers require something

different. Additionally, if you are a heating engineer working with an electrical partner, or are Part P certified, this product could also add value to your business.

Taking minutes to install, Kalirel radiators are a bonus where time is at a premium as they come pre-wired and only require a switch-fused spur (5-10amp) and a wall bracket assembly kit, both of which are supplied with the product. Salvatore Cirasuolo, managing director at Kalirel UK, explains the technicalities of the system: "Our product

Room heating

is compliant with the latest edition of Building Regulations Part L, 1 and 2. It is a responsive heat management system, using the latest technology to bring intelligence to heating. Each radiator has a tungsten element that absorbs energy quickly to heat the special thermo-dynamic fluid, which then expands, creating a 100% hot point covering the entire heat exchange surface of the radiator. The fluid has a high heat retention level to maximise power usage."

Good sense

"Fitted to each radiator is an electronic thermostat, which is programmable with a pilot wire timer. The thermostat senses whenever the radiator drops below the desired temperature and automatically calculates how much power is needed to keep the temperature constant. The system therefore only uses the exact amount of energy required, with all the electricity used converted directly into heat. For example, nine hours of continuous heat uses a maximum of 5kW hours of electricity, allowing heating bills to be reduced by up to 35%, depending on the existing system."

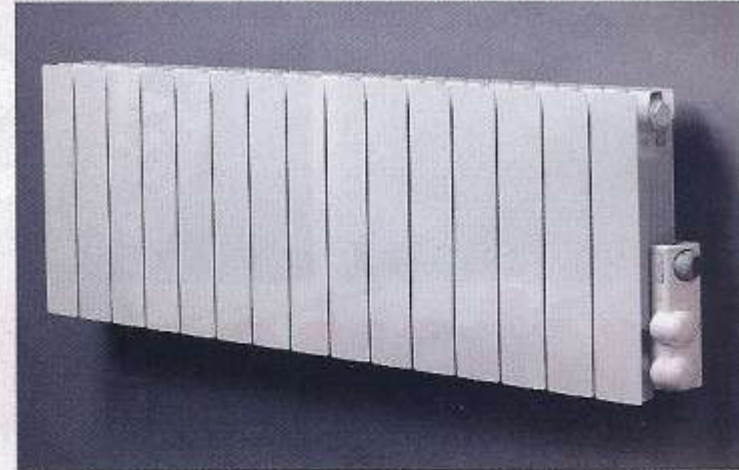
In the current economic climate and fragile housing market, many people are opting to improve rather than move. Kalirel heating may appeal to your customers who are adding extensions or conservatories to their property because each radiator is effectively a central heating unit in its own right. This makes it easy to isolate areas such as home offices and guest rooms that require different amounts of heat at different times of day to the rest of the house. Similarly, guest house and hotel owners are finding that installing Kalirel radiators enables them to

They are said to be more energy efficient and cost effective to run than storage or conventional panel heaters, and a better choice where electric heating is the preferred or only option



programme heat according to room occupancy and avoid heating rooms when they are not in use.

The system is also said to suit those who want a hi-tech approach to their home or have impaired mobility. By using Kalirel's wireless hand-held programmer, Cyclope, room temperatures can be remotely pre-set and adjusted as often as required, with as much ease as changing the TV channel. Cyclope can also tell users how much energy each radiator is using and how much it is costing to run them, whether individually or collectively.



GET THE FACTS...

Kalirel radiators are available in two aluminium and one steel option, each with different features. The company's towel rails have the same advantages as the radiator range and come in four designs with three electrical options.

**For more information circle
PHPI readerlink 462**